

New Product

ACI Services, Inc. Packing Leakage Monitor

ACI's Enviroline Packing Leakage Monitor provides real solutions for companies challenged with lowering fugitive emissions from reciprocating compressors.



Installed in the packing vent line system, it provides a safe, reliable & cost effective means to monitor and quantify leakage rates from piston rod packing, as well as other vent systems. Designed for easy installation via one inlet & one outlet connection, it can also accommodate systems where multiple measurement points are required. Contact our Sales Team for further information.

Klaus is the proud Distributor of ACI Cylinders and Unloaders in Western Canada.

Our Sales Team



Kelly Zaitsoff



Stefan Rogozinski



Steve McLwraith

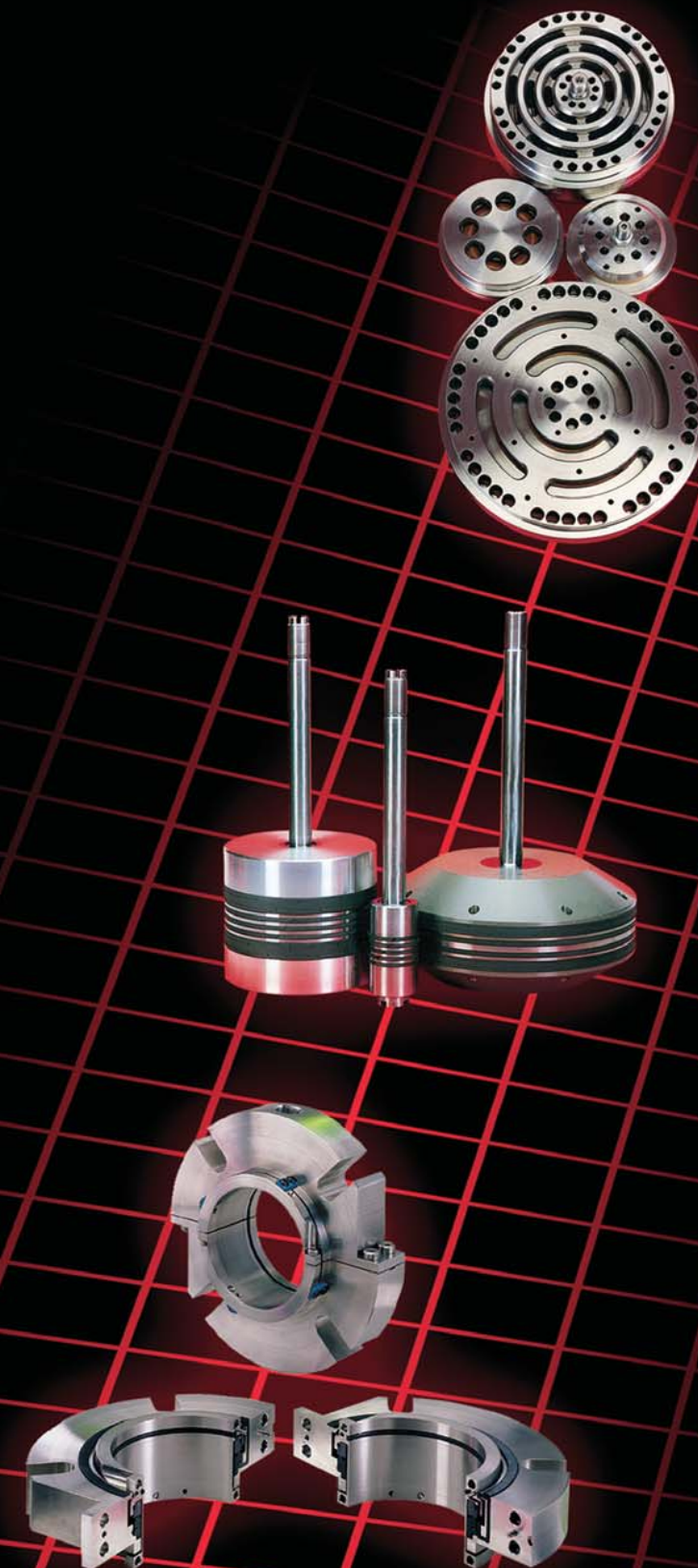


Dave Janzen

KLAUS logo and contact information including addresses, phone numbers, fax numbers, and website.

KLAUS

- Best Service for Compressor Turn-Arounds
Manufacturing & Reconditioning of Compressor Valves Rods & Pistons
Valve Optimization
ACI Cylinders & Unloaders
Mechanical Seals
Engineered Seals
Service Centre



## KLAUS



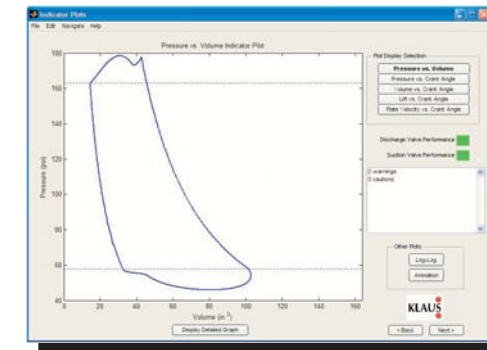
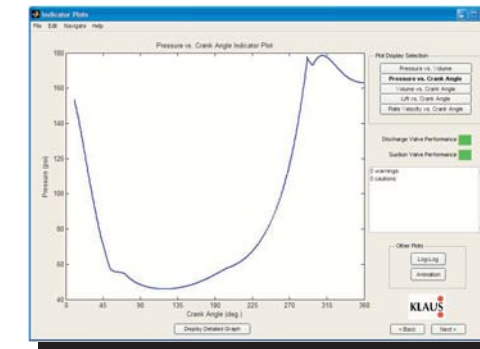
Mike Smith, P.Eng



John Person, P.Eng

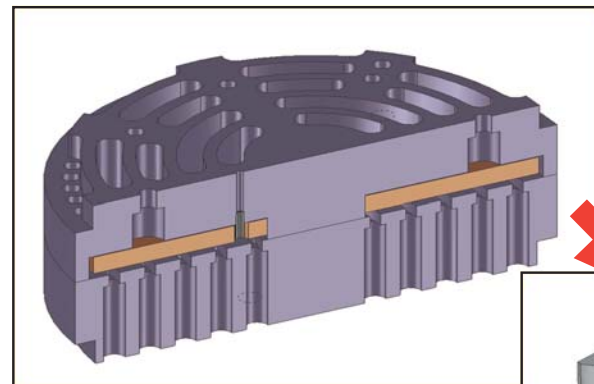


With these new tools, Klaus aims to improve client support in making valve recommendations to accommodate changing field conditions, support new OEM designs, and offer API 618 compliant valve reports.

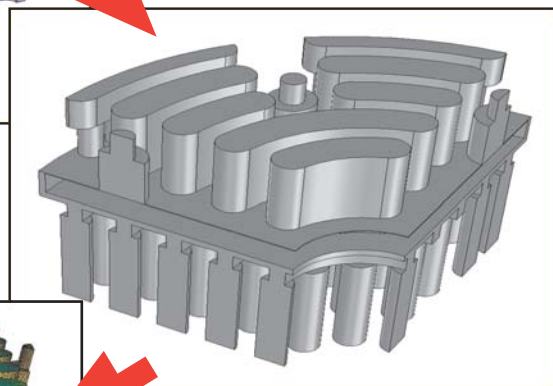


Valve Simulation

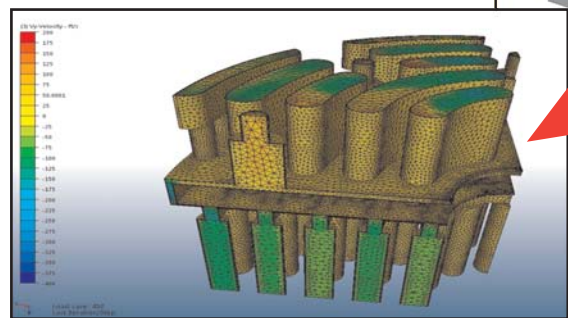
Klaus introduces enhanced engineering capability with the development of **ValveSim**, utilizing Computational Fluid Dynamics (CFD) to analyze valve flow and motion modeling.



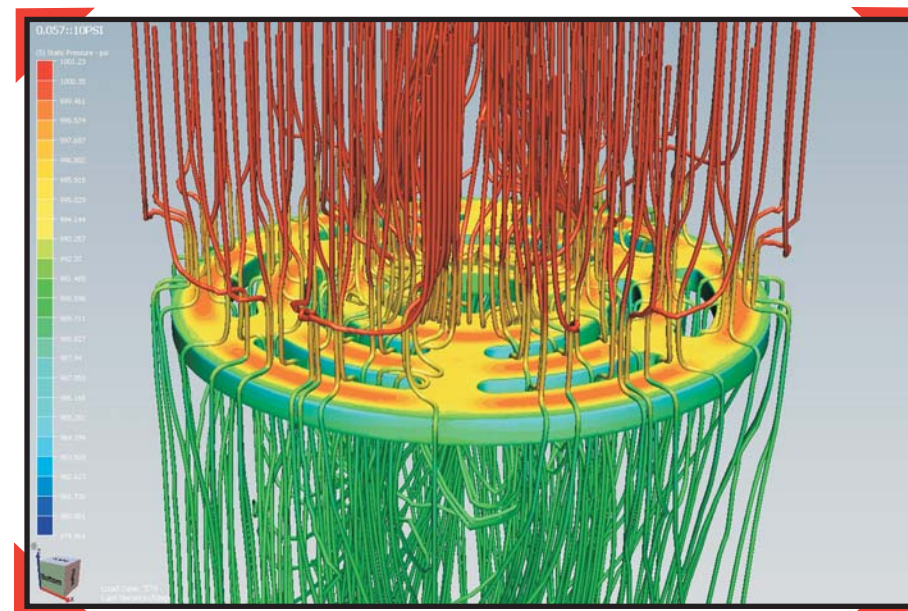
Valve 3D Model



Gas Volume



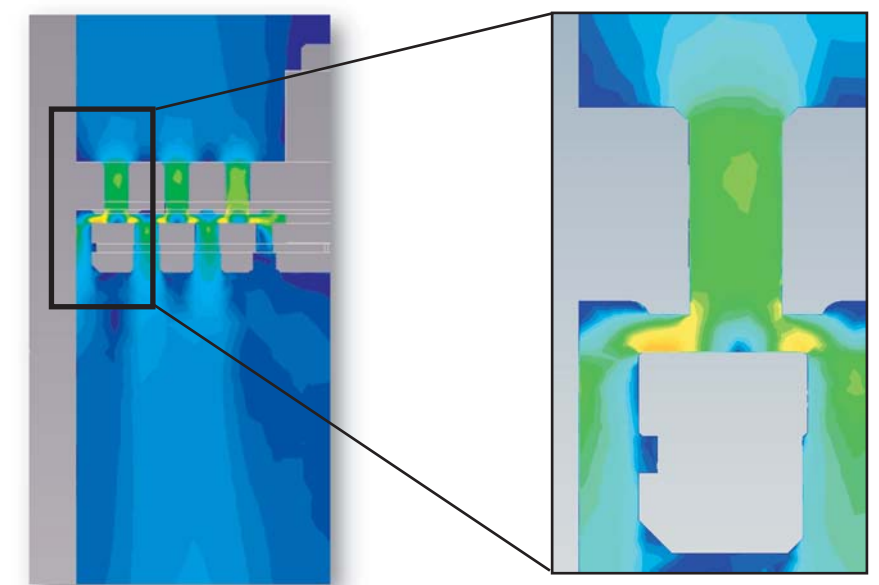
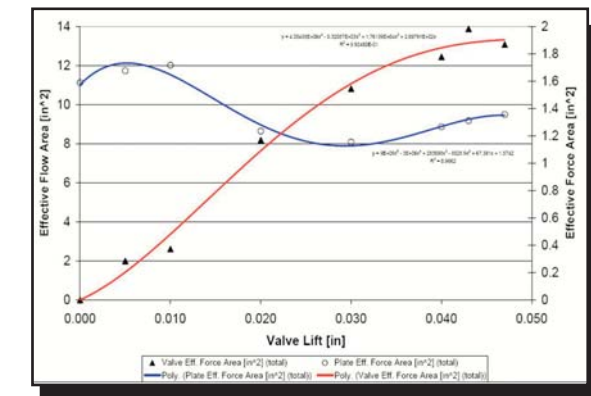
CFD Model



Using CFD techniques, Klaus takes conventional flow loop testing into the 3D digital world. All new, Klaus valve designs start out as a 3D computer model, which are then tested in a 'virtual flow loop' by using CFD to map out gas pressure and velocity profiles through the valve. These valve pressure responses are then mapped to the new **ValveSim** motion simulation program for further analysis.

**ValveSim** is a new valve dynamics analysis tool, developed in house, which allows Klaus engineers to review the valve response in changing compressor conditions and making recommendations for improved performance.

Valve Curves



Pressure & Flow Modeling